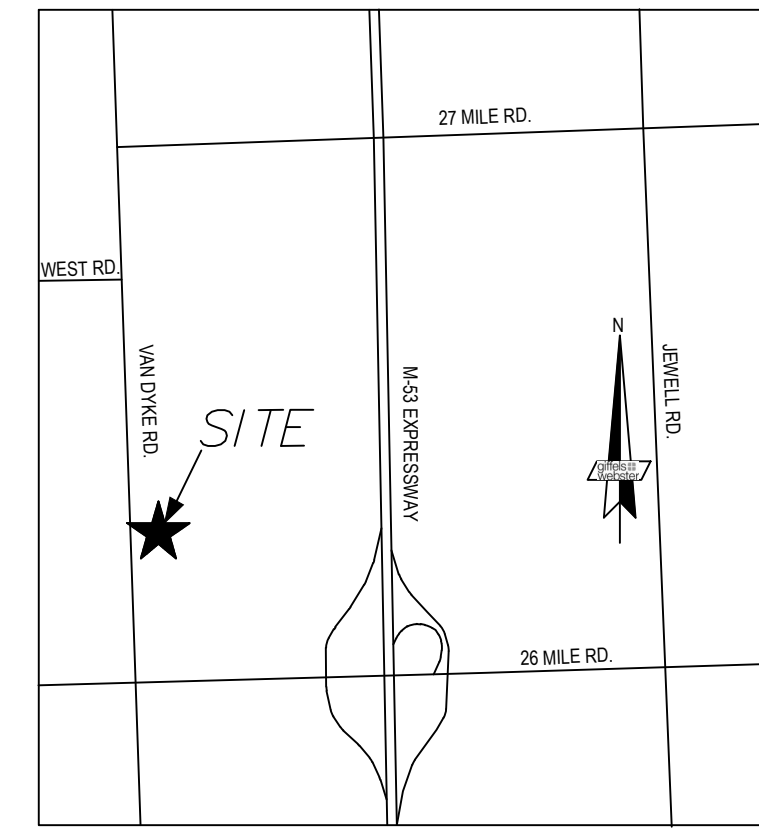


TOPOGRAPHIC SURVEY LEGEND

- E/ PAVEMENT
- CURB
- E/ GRAVEL
- CL ROAD
- E/ WALK
- RAILROAD
- E/ BRICK
- MISC. LINE
- FENCE
- GUARD RAIL
- WALL
- BLOC. LINE
- OVERHEAD WIRES
- RAILING
- OVERHANG LINE
- T/ BANK
- B/ BANK
- CL DITCH/STREAM
- SHRUB LINE
- SAN. MH
- O.C.O. SAN. CLEAN OUT
- SAN. RISER
- SAN. PUMP STATION
- COMB. MH
- GATE VALVE
- HYDRANT
- WATER VALVE
- WATER METER
- POST INDICATOR VALVE
- WELL HEAD
- FDC CONNECTION
- IRRIGATION CONTROL BOX
- STORM MH
- CATCH BASIN
- BEEHIVE CB
- STEAM MH
- PUBLIC LIGHTING MH
- GAS METER
- GAS RISER
- GAS VALVE
- TELE. MH
- TELE. RISER
- TELE. MH
- TELE. CROSS BOX
- CABLE RISER
- PAY PHONE
- MANHOLE
- SIGN
- PROT. POST/GUARD POST
- ASPH.
- ASPHALT
- EXISTING ELEVATION
- SOIL BORING
- MONITORING WELL
- LAWN IRRIG. HEAD
- CENTERLINE R.R. TRACK
- MISC. TOPO. SHOT
- SURVEY CONTROL POINT
- FOUND IRON
- BENCHMARK
- F. CUT CROSS
- SECTION COR.
- PLD LINE
- STEAM
- SECTION LINE
- ELECTRIC OVERHEAD
- TELEPHONE OVERHEAD
- EX. ROW
- TREE LINE
- WATER EDGE
- WETLAND LINE
- STM
- SAH
- W
- WATER LINE
- GAS LINE
- UGE
- UGT
- UG TELE. LINE
- UG CABLE TV LINE
- PAINT STRIPE
- COMBINED SEWER
- PLD LINE
- STEAM LINE
- SECTION LINE
- ELECTRIC OVERHEAD
- TELEPHONE OVERHEAD
- EX. ROW
- CULVERT E.S.
- ROOF/DOWN SPOUT
- OVERFLOW/OUTLET STRUCTURE
- STORM CLEAN OUT
- ROUND CB
- LIGHT POLE
- UTILITY POLE
- ELEC. TRANS.
- AIR CONDITIONER
- ELEC. MH
- ELEC. METER
- ELEC. RISER
- TRAFFIC CONTROL BOX
- GUY
- DECIDUOUS TREE
- CONIFEROUS TREE
- DEAD TREE
- UTILITY FLAG
- BLDG. CORNER (FIELD LOCATED)
- HANDICAP PARKING
- WETLAND FLAG
- BUSH/SHRUB
- PARKING METER
- RESIDENTIAL MAILBOX
- U.S. MAILBOX
- CONC.
- A.C.
- G.P.
- C.L.F.
- D.L.
- F.H.
- OVERHANG
- F.I.
- S.I.
- F.I.P.
- M.
- R.
- F.M.
- S.N.
- CMP
- RCP
- CONCRETE
- AIR CONDITIONER
- GUARD POST
- CHAIN-LINK FENCE
- DOOR LEDGE
- FINISHED FLOOR
- SET IRON
- FOUND IRON PIPE
- MEASURED
- RECORD
- SET MONUMENT
- SET NAIL
- CORROGATED METAL PIPE
- REINFORCED CONCRETE PIPE

BENCHMARK DATA

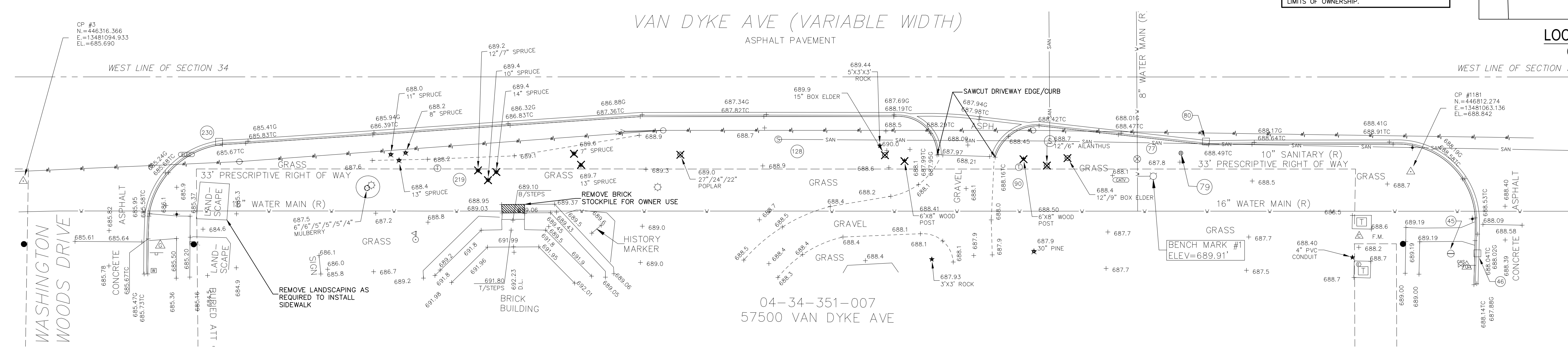
(NAVD 88) DATUM
 SITE BENCHMARK NO. 1
 ARROW ON HYDRANT ON THE EAST SIDE OF VAN DYKE AVENUE AT GRANITE. ELEVATION=689.91'
NOTES:
 - TELEPHONE, GAS, ELECTRIC, CABLE TV, STEAM, PUBLIC LIGHTING UTILITY MAPS WERE NOT AVAILABLE AT TIME OF SURVEY.
 - TREE SIZES AND SPECIES ARE THE BEST ESTIMATION OF THE FIELD SURVEYOR. SPECIFIC QUESTIONS REGARDING INDIVIDUAL TREES SHOULD BE DIRECTED TO A QUALIFIED FORESTER.
 - NO BOUNDARY SURVEY WAS PERFORMED BY GIFFELS WEBSTER AT TIME OF SURVEY.
 - NO TITLE COMMITMENT POLICY WAS PROVIDED. THEREFORE EASEMENTS MAY EXIST THAT ARE NOT SHOWN.
 - NO CERTIFICATION CAN BE MADE AS TO LIMITS OF OWNERSHIP.



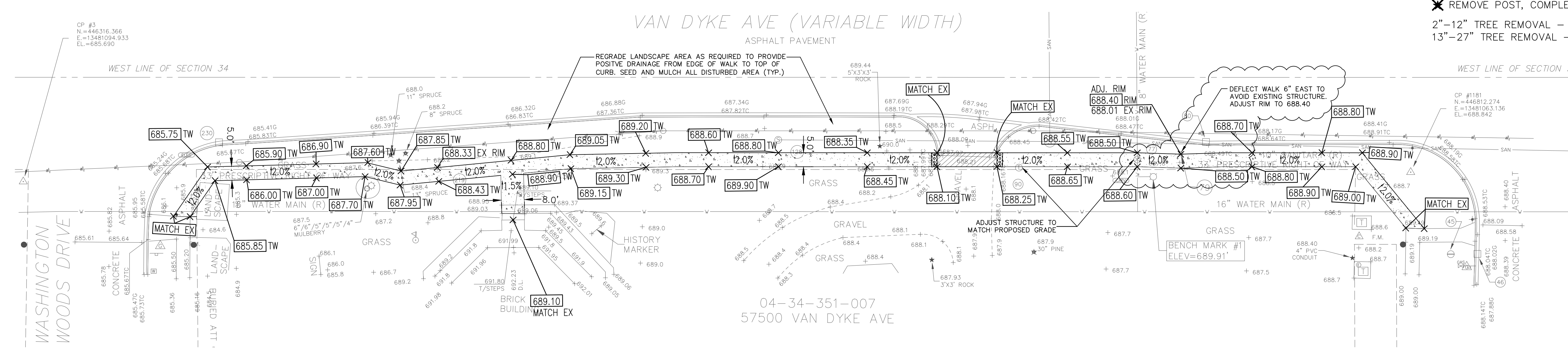
giffels webster
 Engineers
 Surveyors
 Planners
 Landscape Architects
 Environmental Specialists
 6303 26 Mile Road
 Suite 100
 Washington, MI 48094
 p (586) 781-8950
 f (586) 781-8951
 www.giffelswebster.com

Executive: PM
 Manager: AW
 Designer: JP
 Quality Control: AW
 Section: 34
T-4-N R-12-E
 Professional Seal:

EXISTING / DEMOLITION PLAN



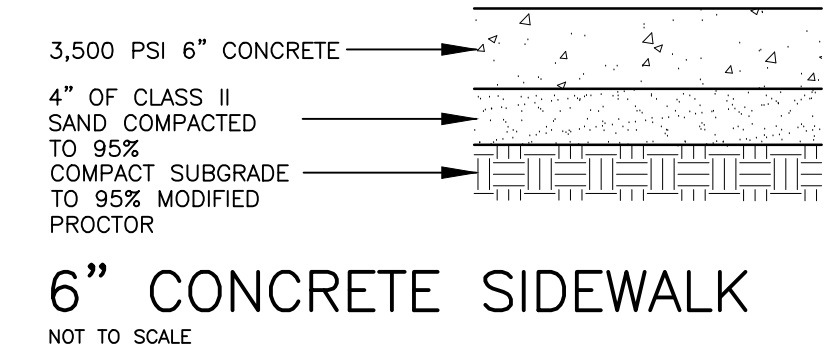
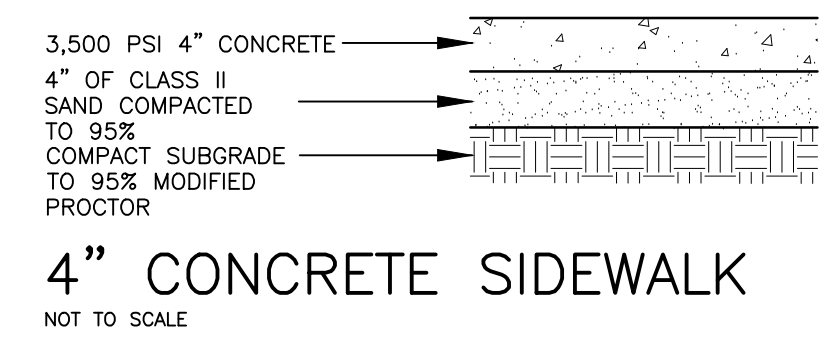
PROPOSED PLAN



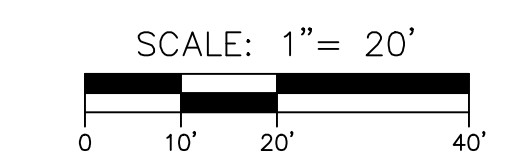
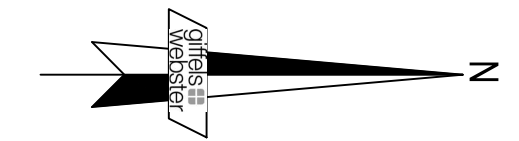
- LEGEND**
- ✕ REMOVE TREE, COMPLETE
 - ✕ REMOVE POST, COMPLETE
 - 2"-12" TREE REMOVAL - 8 EACH
 - 13"-27" TREE REMOVAL - 6 EACH

STRUCTURE LIST

STRUCTURE	TYPE	RIM
45	STORM MANHOLE	688.62
46	CATCH BASIN	687.79
77	GATE VALVE	688.09
79	242.1 DIAMETER	688.01
80	CATCH BASIN	688.03
90	TELEPHONE MANHOLE	688.23
128	SANITARY MANHOLE	688.67
219	TELEPHONE MANHOLE	688.33
230	CATCH BASIN	685.19



- LEGEND**
- ✕ [XXX.XX] TW TOP OF WALK GRADE
 - [Pattern] 4" CONCRETE SIDEWALK 2,300 SF
 - [Pattern] 6" CONCRETE SIDE WALK 108 SF
 - [Pattern] ADA DETECTABLE WARNING TILE



DATE	ISSUE
9/23/14	TOWNSHIP REVIEW
12/22/14	MCDNR REVIEW
05/06/16	FOR BIDS
05/18/16	ADDENDUM #1

Developed For:
CHARTER TOWNSHIP OF WASHINGTON
 57900 VAN DYKE
 WASHINGTON, MI 48094

(586) 781-0084
LOREN ANDRUS
OCTAGON HOUSE

PROPOSED SIDEWALK
 WASHINGTON, MI
 MACOMB COUNTY
 MICHIGAN

Date: 09.17.14
 Scale: 1"=20'
 Sheet: SP-01
 Project: 18198.00

Copyright © 2014 Giffels Webster. No reproduction shall be made without the prior written consent of Giffels Webster.